

# Microminiature Toggle Switches ESD proof



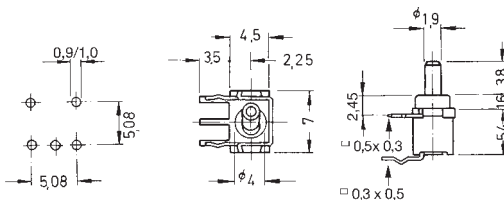
## Specifications:

Contact rating:	max. 28 V DC, 0,4 VA min. 20 mV DC, 1 $\mu$ A
Contact resistance:	< 100 m $\Omega$
Insulation resistance:	> 500 M $\Omega$ at 250 V DC
Dielectric strength:	250 V, 50 Hz for the duration of 1 minute
Operating temperature:	- 20° to + 80° C
Mechanical life:	minimum 30 000 operations
Contacts:	phosphor bronze, gold-plated
Terminals:	PC terminals, crimped, phosphor bronze, gold-plated
Material:	case and lever: PES, meets UL 94 V-0, washable
Mounting:	on pc-board
Soldering conditions:	auto-soldering – max.: 7 sec, 250° C $\pm$ 5° C – max.: 5 sec, 270° C $\pm$ 5° C
ESD resistance:	> 8 kV (between lever and terminals)

**Models :** Switching functions: the closed contacts are opposite to the lever position;  
Switching functions F/H: when looking at the brand name on the right hand side.

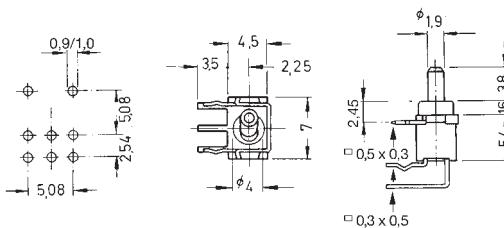
### SPDT

FT 1 D – RA	on	–	on
FT 1 E – RA	on	off	on
FT 1 F – RA*	mom	–	on
FT 1 G – RA*	mom	off	mom
FT 1 H – RA*	mom	off	on

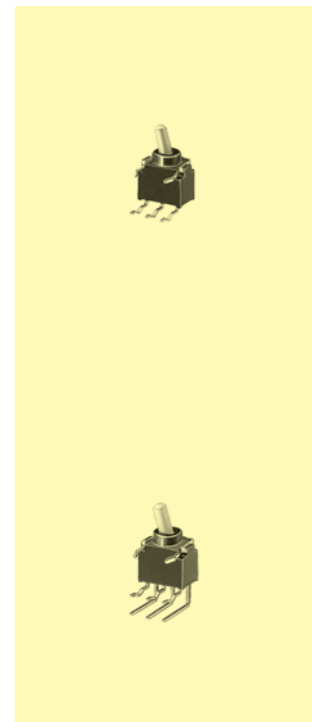


### DPDT

FT 2 D – RA	on	–	on
FT 2 E – RA	on	off	on
FT 2 F – RA*	mom	–	on
FT 2 G – RA*	mom	off	mom
FT 2 H – RA*	mom	off	on



washable



\* Non-stock item; minimum quantity and delivery time on request



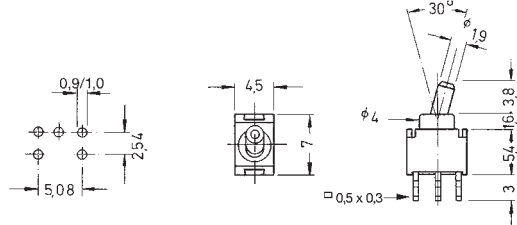
# Microminiature Toggle Switches ESD proof

**Models:** Switching functions: the closed contacts are opposite to the lever position;  
 Switching functions F/H: when looking at the brand name on the left hand side.

washable

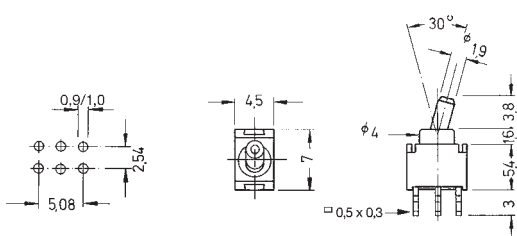
## SPDT

FT 1 D	on	-	on
FT 1 E	on	off	on
FT 1 F	mom	-	on
FT 1 G	mom	off	mom
FT 1 H	mom	off	on



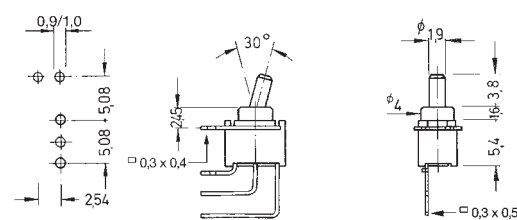
## DPDT

FT 2 D	on	-	on
FT 2 E	on	off	on
FT 2 F	mom	-	on
FT 2 G	mom	off	mom
FT 2 H	mom	off	on



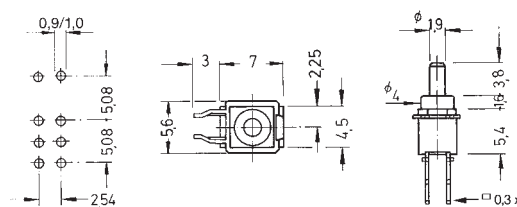
## SPDT

FT 1 D-VM	on	-	on
FT 1 E-VM	on	off	on
FT 1 F-VM*	mom	-	on
FT 1 G-VM*	mom	off	mom
FT 1 H-VM*	mom	off	on



## DPDT

FT 2 D-VM	on	-	on
FT 2 E-VM	on	off	on
FT 2 F-VM*	mom	-	on
FT 2 G-VM*	mom	off	mom
FT 2 H-VM*	mom	off	on



\* Non-stock item; minimum quantity and delivery time on request