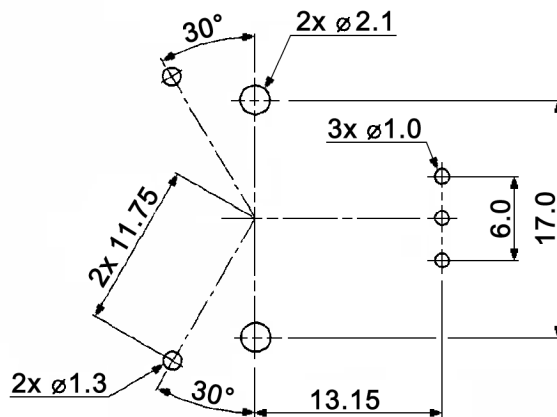


P.C.B. LAND DIMENSION ± 0.05
 $t=1.6\text{mm}$



Tolerances: up to 10: $\pm 0.2\text{mm}$ above 10-50: $\pm 0.3\text{mm}$	Date	Name
	10/09	dr

MER 23-20

			knitter-switch
Modifications	Date	Name	

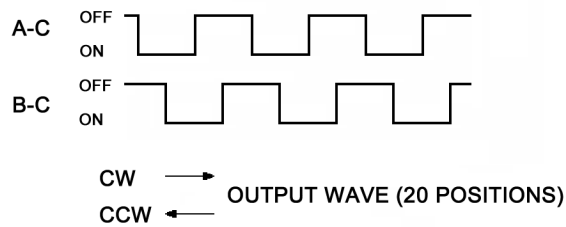
30 19 39

Page
1/2

Specifications:

Contact rating: 10mA, 5V DC
 Contact resistance: 1Ohm max.
 Insulation resistance: 100MOhm min. at 100V DC for 1 minute +/-5sec.
 Dielectric strength: 100V AC (50/60Hz) for 1 minute
 Operating temperature: -10°C to +70°C
 Mechanical life: 30 000 cycles of 360°CW and 360°CCW
 Rotational torque: 60 +/-41gf.cm
 Soldering conditions: 245 +/-5°C, 5 +/-1sec.
 Material: Contact plate: phosphor bronze, silver plated
 Terminal: brass, silver plated
 Spring: stainless steel, natural
 Case: PA66, black
 Slider: POM, black
 Frame: SPTE, natural

ENCODER OUTPUT SIGNAL



Tolerances: up to 10: ±0.2mm above 10-50: ±0.3mm			Date	Name	<h1>MER 23-20</h1>
			10/09	dr	
			knitter-switch		<h2>30 19 39</h2>
					Page
					2/2
Modifications	Date	Name			